

## **Door and Drawer Cabinets**

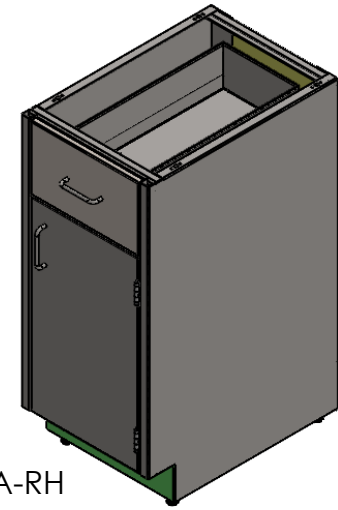
Full stainless steel construction with single door and drawer design.

Use "LH" or "RH" to denote which side the hinge for the door is on.

If locks are used, add the suffix "LK" to the part number.

## **Features**

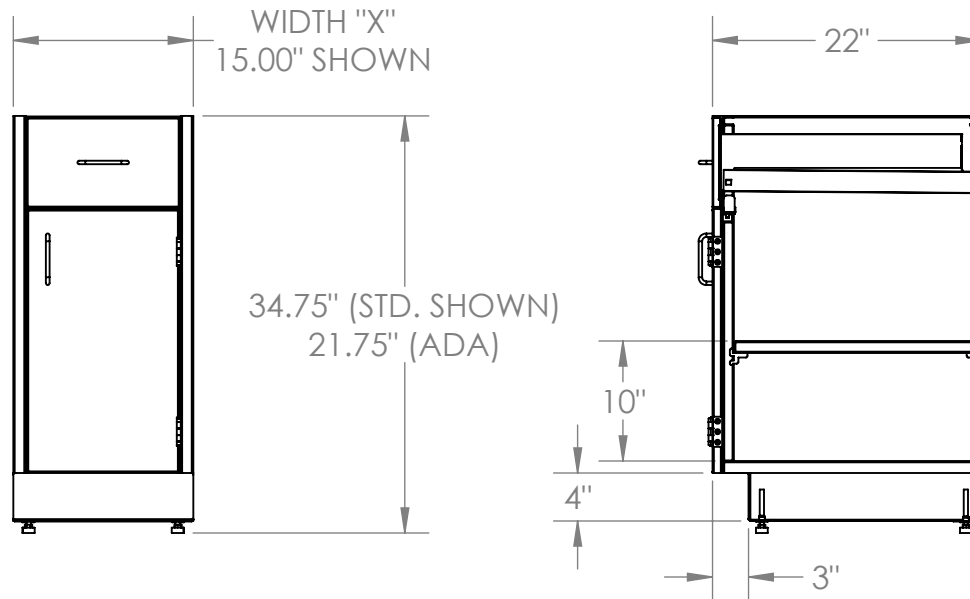
- All stainless components
- Adjustable shelf
- Removeable back panel
- 21.5" full extension glides
- 4 -adjustable leveling feet
- Stainless 5-knuckle hinges
- 4" wire pull handles
- ADA heights available
- \*OPTIONAL\*  
Locking door and/or drawer



\*OPTIONAL\*  
LOCKS

Example: SBC3515-A-RH

## **Product Dimensions**



STANDARD HEIGHT	
WIDTH ("X")	NUMBER
12"	SBC3512-A-(LH/RH)
15"	SBC3515-A-(LH/RH)
18"	SBC3518-A-(LH/RH)
21"	SBC3521-A-(LH/RH)
24"	SBC3524-A-(LH/RH)

ADA HEIGHT	
WIDTH ("X")	NUMBER
12"	SBC3212-A-(LH/RH)
15"	SBC3215-A-(LH/RH)
18"	SBC3218-A-(LH/RH)
21"	SBC3221-A-(LH/RH)
24"	SBC3224-A-(LH/RH)

**UNLESS OTHERWISE SPECIFIED:**

DIMENSIONS ARE IN INCHES  
TOLERANCES:  
ANGULAR ±2.50°  
ONE-PLACE ±0.5  
TWO-PLACE ±0.13

**PROPRIETARY AND CONFIDENTIAL**

THE INFORMATION CONTAINED IN THIS DRAWING IS THE SOLE PROPERTY OF INTER DYNE SYSTEMS. ANY REPRODUCTION IN PART OR AS A WHOLE WITHOUT THE WRITTEN PERMISSION OF INTER DYNE SYSTEMS IS PROHIBITED.

REV.	REVISION DESCRIPTION	DRAWN	CHECKED	DATE	COMMENTS:
A	STANDARD PRINT CREATED	BWA		10/20/20	

**QTY: N/A**



**INTER DYNE  
SYSTEMS, INC**

676 E. Ellis Rd., Norton Shores, MI 49441  
Phone: 231-799-8760 Fax: 231-799-9690

**PART NO.**

**BASE CABINET - ONE DOOR-ONE DRAWER**

MATERIAL: 18 GA

FINISH: #4