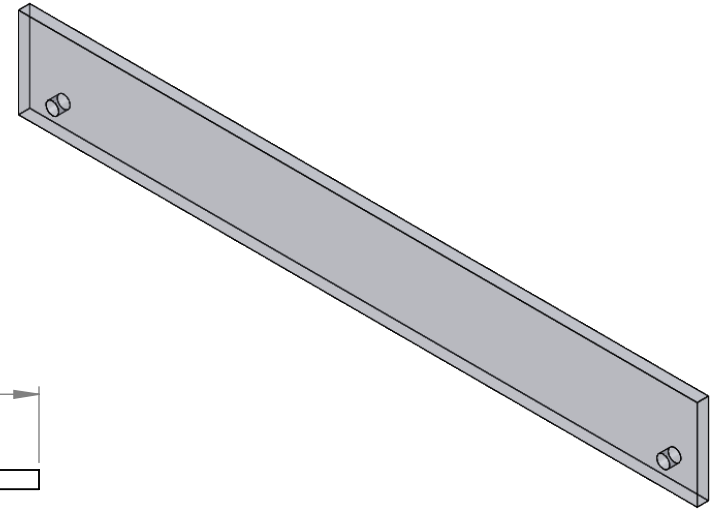


## "ASL" Acrylic Shelf Lip

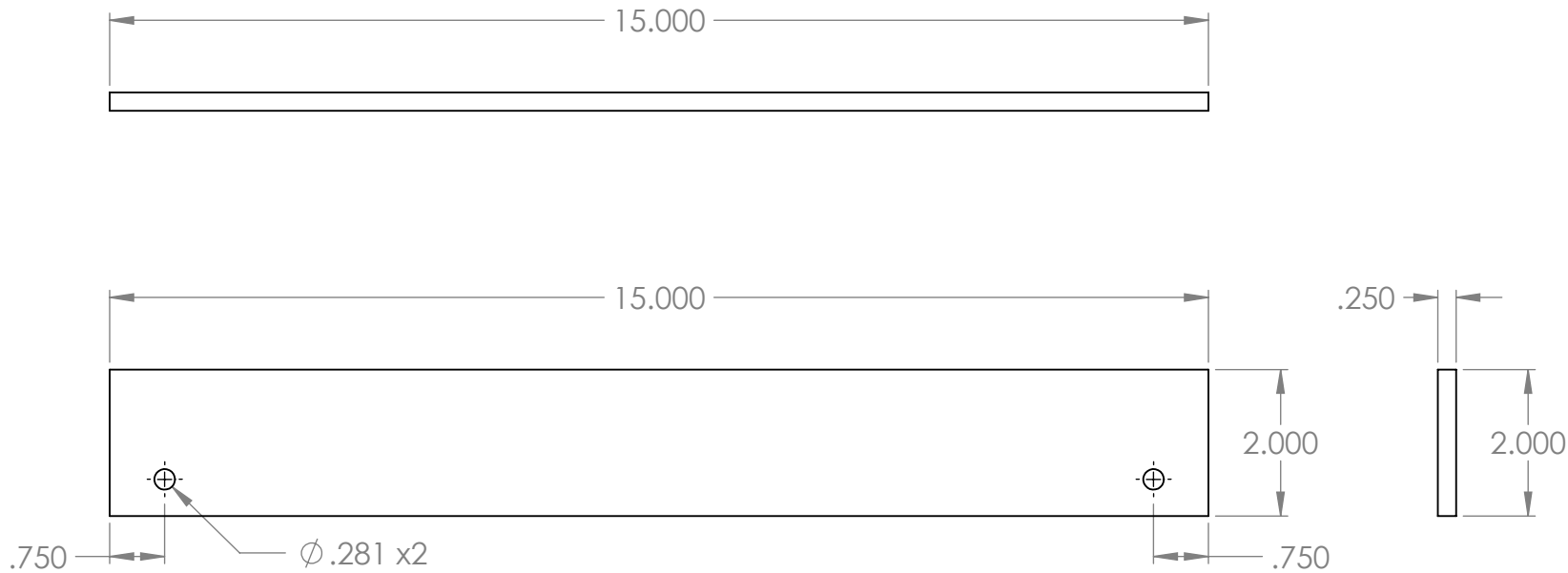
Clear acrylic shelf lip with mounting holes.

## Features

- 15"w x 2"h x 1/4"d
- 2 -  $\varnothing$ .281 mounting holes
- Eased and flame polished edges



## Product Dimensions



UNLESS OTHERWISE SPECIFIED:		NAME	DATE
DIMENSIONS ARE IN INCHES TOLERANCES: FRACTIONAL $\pm$ ANGULAR: MACH $\pm$ BEND $\pm$ TWO PLACE DECIMAL $\pm$ THREE PLACE DECIMAL $\pm$	DRAWN	ASR	11/8/2018
	CHECKED		
	ENG APPR.		
	MFG APPR.		
INTERPRET GEOMETRIC TOLERANCING PER:	Q.A.		
MATERIAL	COMMENTS:		
1/4" CLEAR ACRYLIC			
FINISH			
EDGES EASED & POLISH			
DO NOT SCALE DRAWING			
INTER DYNE SYSTEM, INC 676 E.Ellis Rd., Norton Shores, MI 49441 Phone: 231-799-8760 Fax: 231-799-9690			
TITLE:			
<h1>ASL-15</h1>			
SIZE	DWG. NO.	REV	
<b>A</b>			
SCALE: 1:5	WEIGHT:	SHEET 1 OF 1	

**PROPRIETARY AND CONFIDENTIAL**  
 THE INFORMATION CONTAINED IN THIS DRAWING IS THE SOLE PROPERTY OF INTER DYNE SYSTEMS. ANY REPRODUCTION IN PART OR AS A WHOLE WITHOUT THE WRITTEN PERMISSION OF INTERDYNE SYSTEMS IS PROHIBITED.