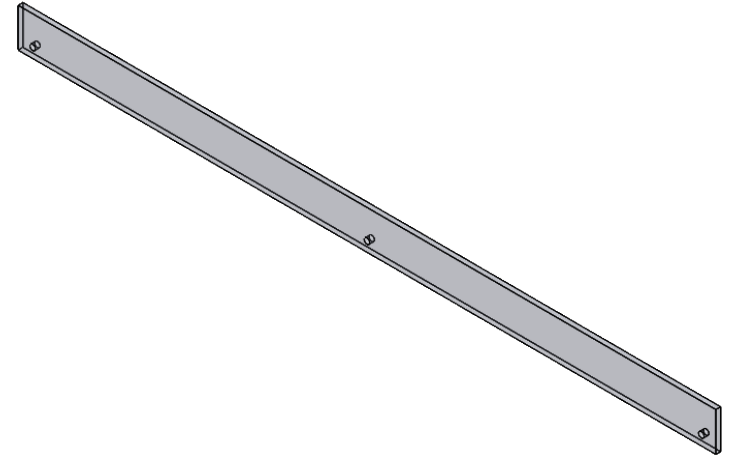


"ASL" Acrylic Shelf Lip

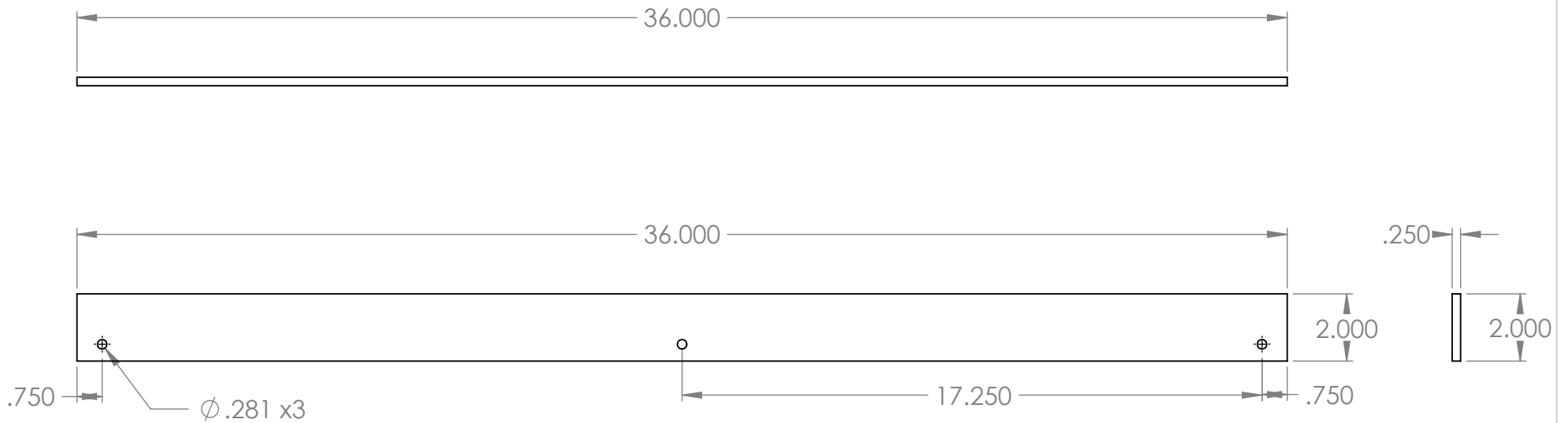
Clear acrylic shelf lip with mounting holes.

Features

- 36"w x 2"h x 1/4"d
- 3 - ϕ .281 mounting holes
- Eased and flame polished edges



Product Dimensions



UNLESS OTHERWISE SPECIFIED:		NAME	DATE	INTER DYNE SYSTEM, INC		
DIMENSIONS ARE IN INCHES		DRAWN	ASR	676 E.Ellis Rd., Norton Shores, MI 49441		
TOLERANCES:		CHECKED		Phone: 231-799-8760 Fax: 231-799-9690		
FRACTIONAL \pm		ENG APPR.		TITLE:		
ANGULAR: MACH \pm BEND \pm		MFG APPR.		ASL-36		
TWO PLACE DECIMAL \pm		Q.A.				
THREE PLACE DECIMAL \pm		COMMENTS:		SIZE	DWG. NO.	REV
INTERPRET GEOMETRIC TOLERANCING PER:				A		
MATERIAL				SCALE: 1:5	WEIGHT:	SHEET 1 OF 1
1/4" CLEAR ACRYLIC						
FINISH						
EDGES EASED & POLISH						
DO NOT SCALE DRAWING						

PROPRIETARY AND CONFIDENTIAL
 THE INFORMATION CONTAINED IN THIS DRAWING IS THE SOLE PROPERTY OF INTER DYNE SYSTEMS. ANY REPRODUCTION IN PART OR AS A WHOLE WITHOUT THE WRITTEN PERMISSION OF INTERDYNE SYSTEMS IS PROHIBITED.